



Fir Tree Kits Detailed Instructions

Combining our Real Wooden Trunks with our All New Green Branches, you can produce a high-quality, custom Old-Growth Fir Tree in short order. You can add Dead Branches, Highlights, even moss, lichens, birds, and more! This kit is modifiable and can be customized as the user sees fit.

Procedure for creating an “Old Growth” Fir Tree:

You’ll need a scrap of extruded or beaded foam. Insert either a wooden mounting pin (6”-9” trunks) or clip & insert a metal pin (11” & 13” trunks) into the trunk base with the sharp end of the mounting pin pointed outwards (figure 1). See more info (insert) for using metal pins. Place the trunk in the foam scrap (figure 2).

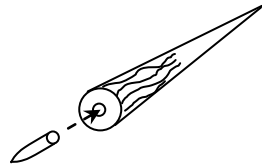


Fig. 1: Add the Mounting Pin

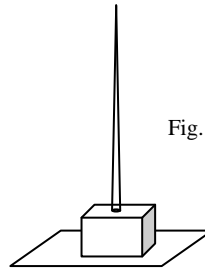


Fig. 2: Trunk mounted upright in a foam block

Next, unfold the Green Branches Material. Note the Dead Branches are contained within the fold; collect these, we’ll use them later. Tear off a portion of the material that will be used as the first “level” of foliage on the tree. **How big?** Keep them small: For an 11” tree, initially only about one inch across (diameter), and later, *two inches* for the largest piece.

Add shape to the material, and then apply to the trunk:

1. Loosen and shape the material: Firstly, a firm portion of material can be made softer by “scrunching” it before applying to the trunk. This is required for most pieces as the fabrication is not perfectly uniform. Loosen the fibers by grasping the outer edges of the Green Branch section using both thumbs (Figure 5), and move hands/wrists inward and outward laterally, breaking some of the bonds amongst the fibers. *This will impart irregularities and permit the material to appear more natural.* For more detail, add partitions to each section of Green Branch material with partial tears.

2. Apply material to trunk: Carefully fit the loosened material over the thin top of the trunk, allowing the top to penetrate the fibers, trying not to break the trunk top. Note: Even if it breaks, you will still be able to make a very detailed model fir tree. Once over the top, slide the material down the trunk (Figure 6). As you slide the material down, impart a bit of curvature to the green branch material using your thumbs.

Apply a dab of white glue to affix the branch material to the trunk. Continue with this process all the way to the top by adding more layers of the prepared branch material. Give particular attention to construction detail at the top of the tree, as this is the most conspicuous

part of the tree. Merely a few fine strands of material placed at the top will do nicely. See Coastmans website under Instructional Videos for additional info.



Fig. 5: Use both thumbs. Add extra partitions to the piece to create additional miniature “branches”.

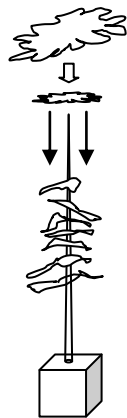
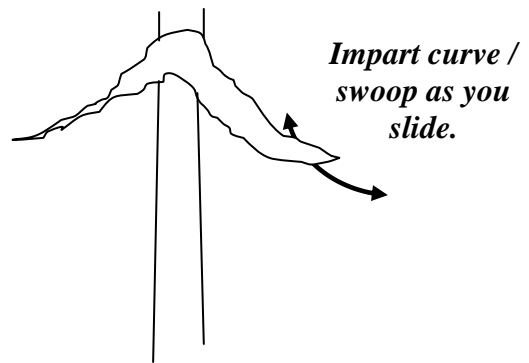


Fig. 6: Slide Green Branches down over the trunk.



Impart curve / swoop as you slide.

3. Add Additional Turf to the Green Branches to increase fullness

You can recollect the wooden turf that falls out of the Green Branches and apply this to the tree. Alternatively, try *Woodland Scenics Conifer Green Coarse Turf*. For adhesive, try Extra Hold Hair Spray (unscented). Work in a well-ventilated area, over a cardboard box to catch the overspray, or outdoors. Apply the spray, and then sprinkle on a bit of turf for a light all-over coating. This is best done over a second cardboard box to catch and reuse the turf that doesn’t stick to the tree (Not the box you used for the adhesive).

CAUTION! Use adhesive sprays with adequate ventilation as fumes are toxic and flammable.

4. Optional Details - Add Turf Highlights:

The trees featured on the Coastmans’ website have **Highlights**. Note the little packets of colored sawdusts in the kit. Working over a container, I “waft” a fine application of **Green** followed by **Tan**. This imparts the effect of reflected sun rays and pinecones.

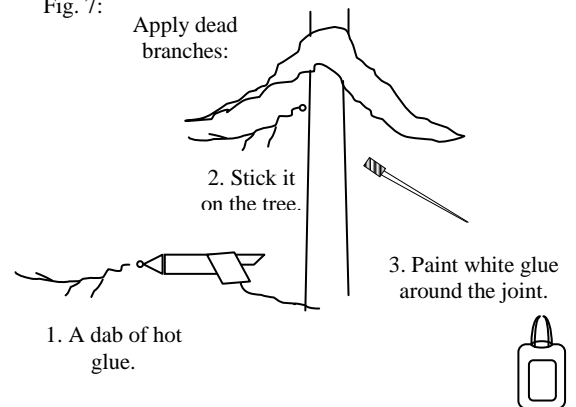
Adding the Dead Branches

This is more challenging. You can drill holes or use hot glue to attach the Dead Branches. On tiny ones, you might try Aleene’s Super Tacky Glue or CA. If you use hot glue, “**Paint**” each joint with white glue & let dry. This will increase strength.

And then you can add even more details!

- Used a little of the Tan turf as needed for moss detail and hiding imperfections.
- Consider a **Bird’s Nest** (see Coastmans website) and **Birds** (try Preiser’s *Birds of Prey*).
- On some trees leave the tops bare and add tiny dead branches.
- Add more dead branches (can’t get too many. Keep ‘em short for best appearance!)
- Paint/Airbrush underside of branches with dilute rust color for a “dead needle effect” (*truly the top secret ingredient!!*)

Fig. 7:



When you are satisfied with the look of your tree, it is ready for the layout.

Thank you for trying this kit! Please visit www.coastmans.com for instructional videos and additional scenery items. Send inquiries and feedback to coastmans@gmail.com.

